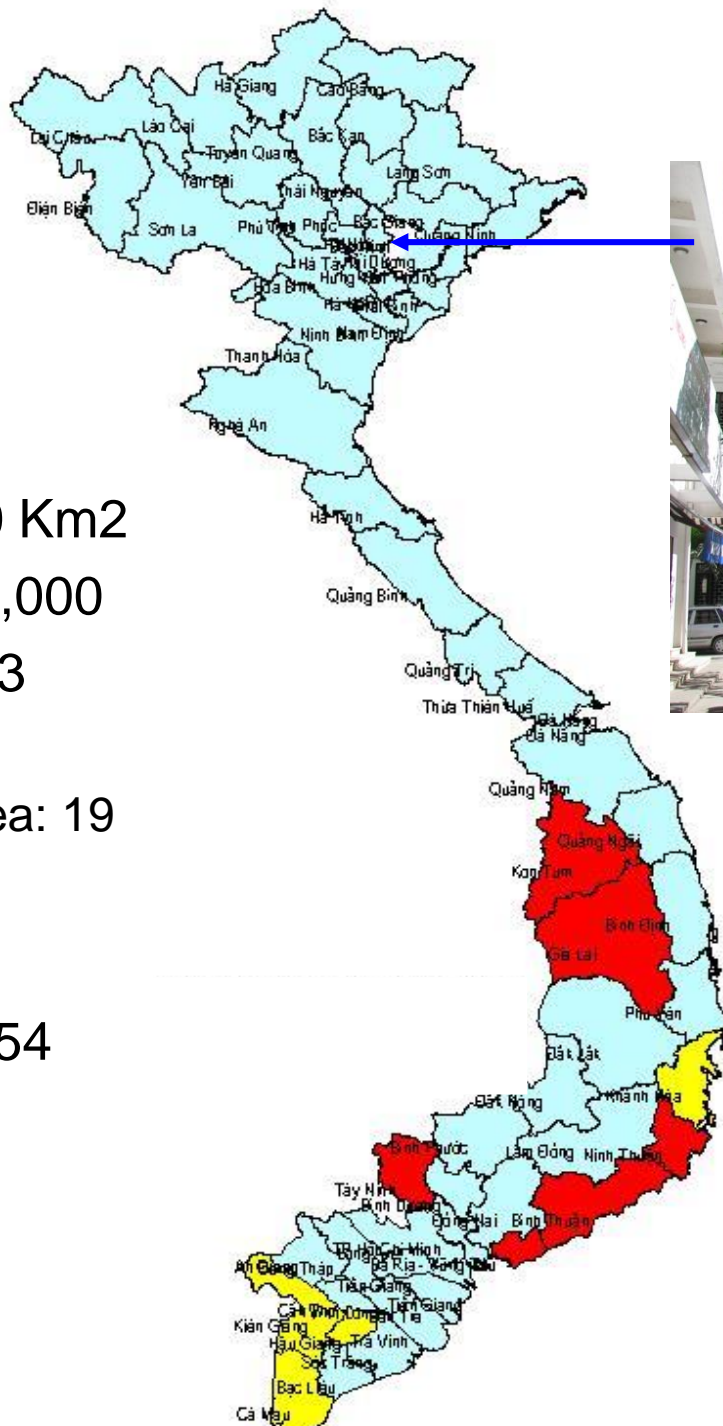




CHANCES FOR DERMATOLOGY TO RE-ENGAGE: LESSONS ON LEPROSY MANAGEMENT FROM VIETNAM

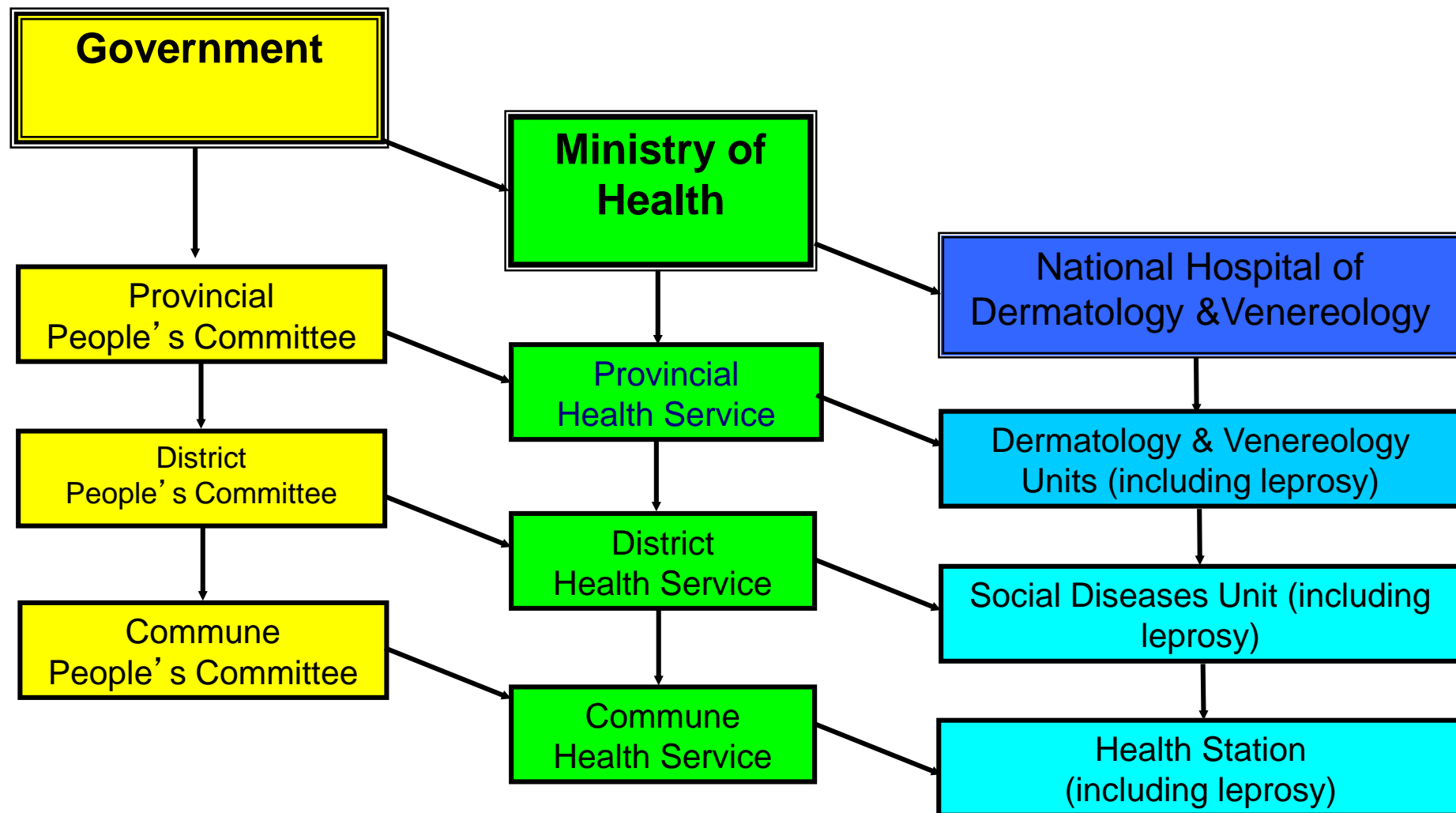
TRAN HAU KHANG
President, Vietnamese Society of
Dermatology and Venereology

2nd ILDS World Skin Summit
Hochiminh City, 10-12 June, 2018

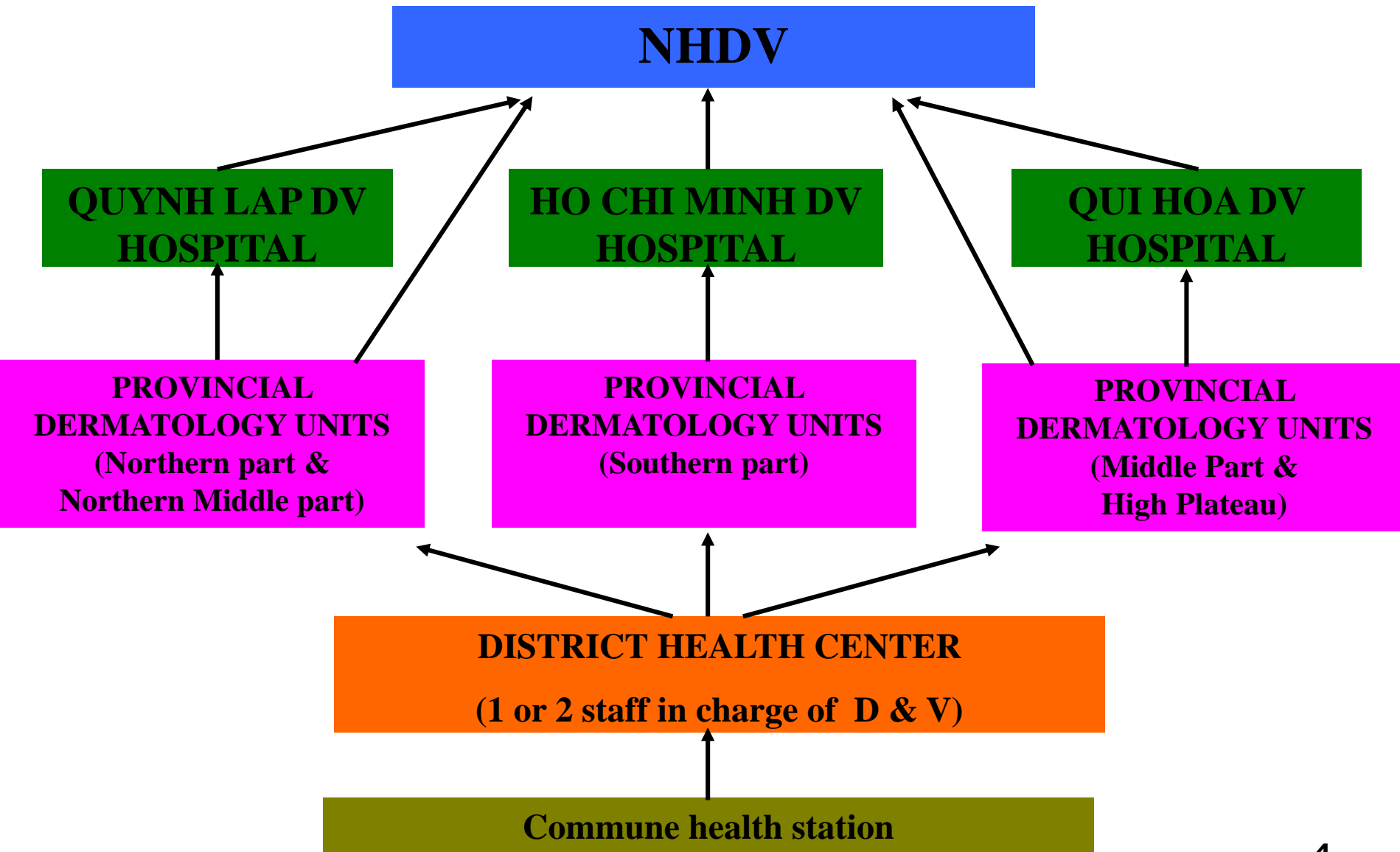


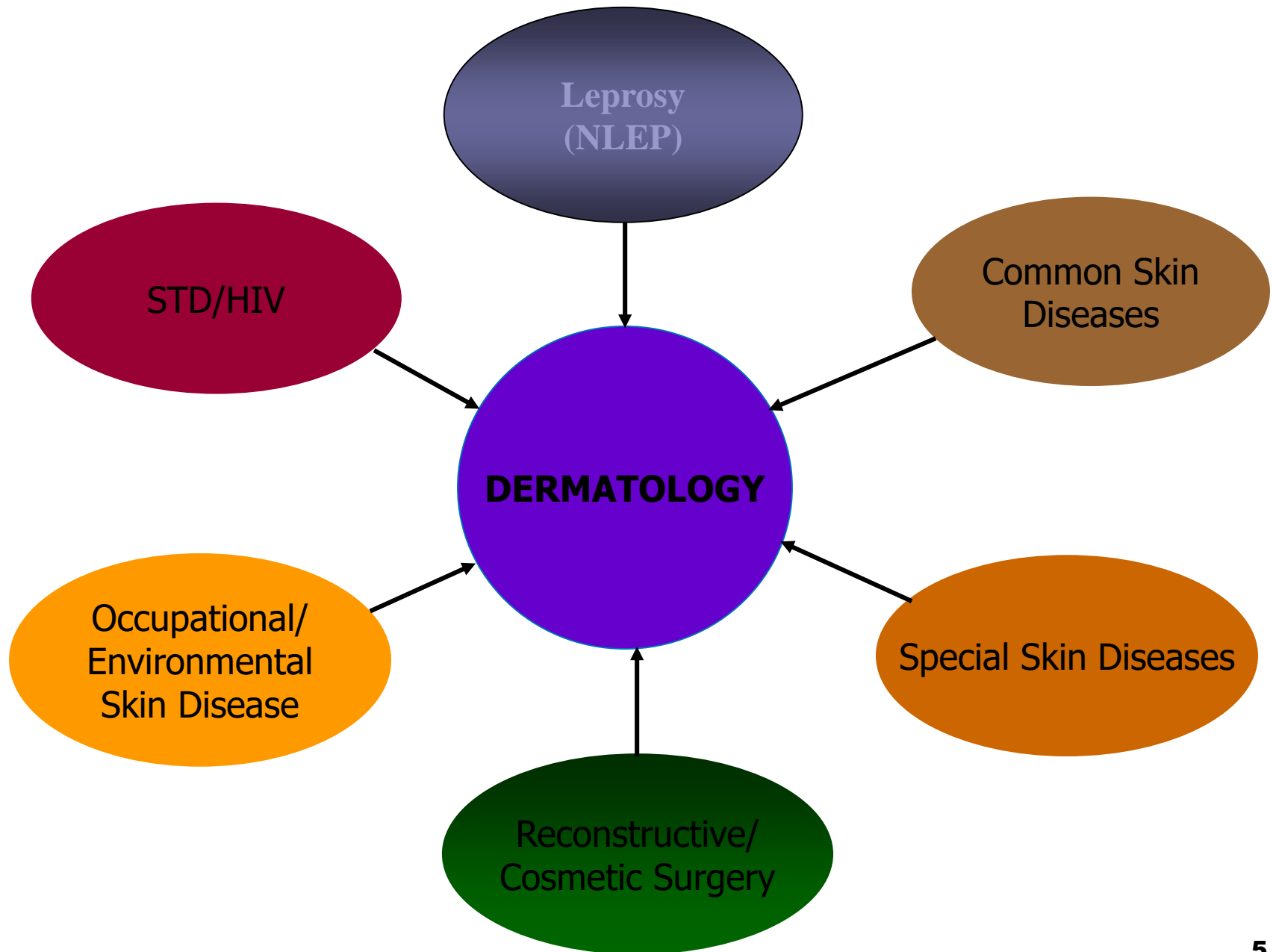
Area: 331,670 Km²
Population: 93,000,000
Provinces/cities: 63
 + Delta/Cities: 44
 + Mountainous area: 19
District: 650
Communes: 10,776
Ethnic minorities: 54

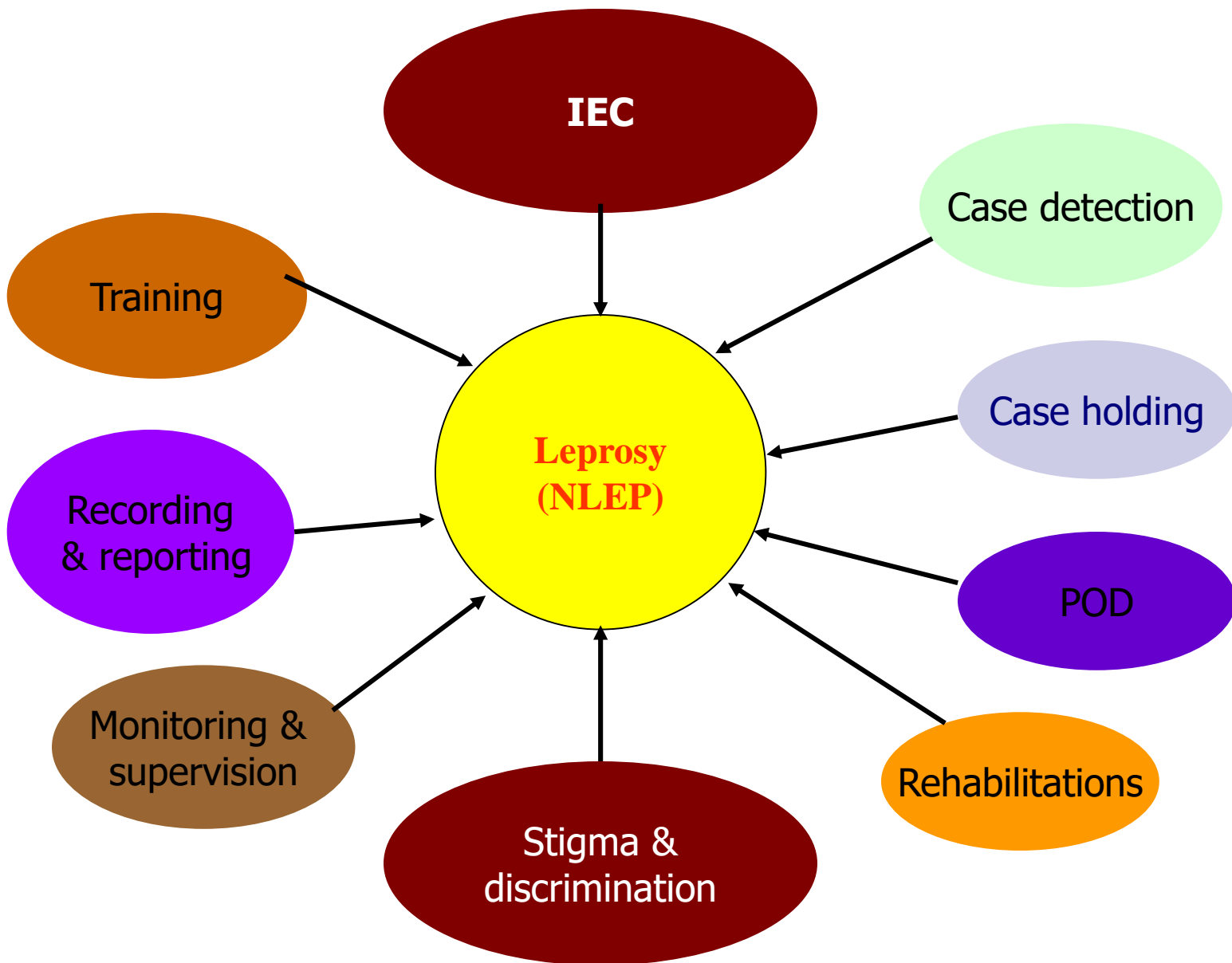
Health System in Vietnam



NETWORK CHART OF DERMATOLOGY







Information of NLEP

- Leprosy: Skin disease
- National level: NHDV
- Provincial level: Unit of D & V
- District /commune: Unit of Social Disease
- 1983: MDT
- 1995: PR < 1/10,000 at National level
- 2000: Reached the goal of leprosy elimination at provincial level.
- 2003: Set up the VN criteria for Leprosy Elimination
- 2012: Reached the VN criteria for LE

Criteria of leprosy elimination at provincial level

- $PR < 0.2/10,000$ in 3 consecutive years
- $CDR < 1/100,000$
- Proportion of Dis. 2 among new cases $< 15\%$
- 100% health staff, community leaders, school pupils have basic knowledge of leprosy.

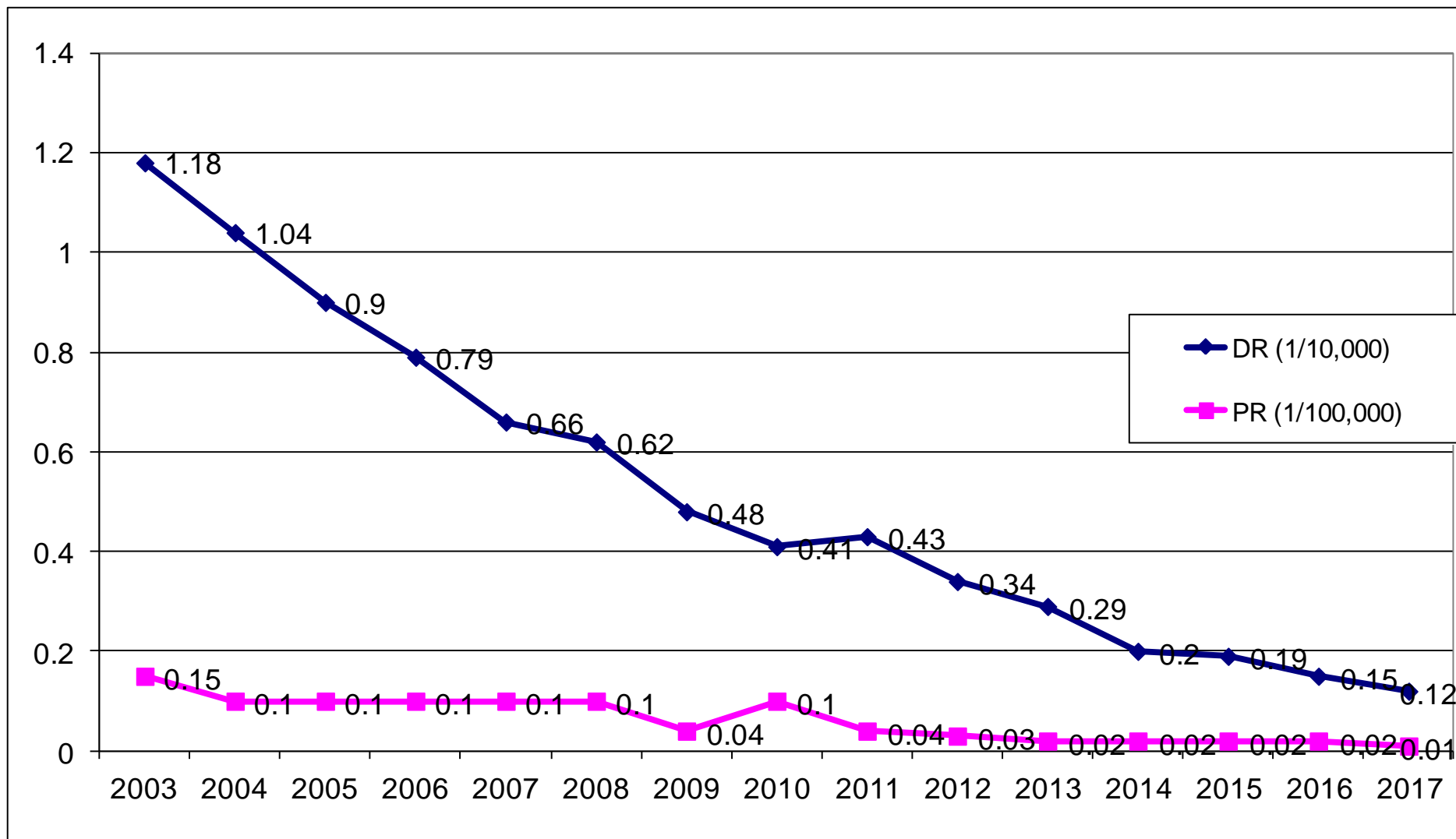
4 Criteria of leprosy elimination at district level

- Prevalence < 0.2/10,000
- 100% of leprosy patients /PAL with disabilities have benefit from POD and rehabilitation activities.
- No stigma /discrimination of leprosy in the community.
- 100% of poor/disabled leprosy patients /PAL has houses.

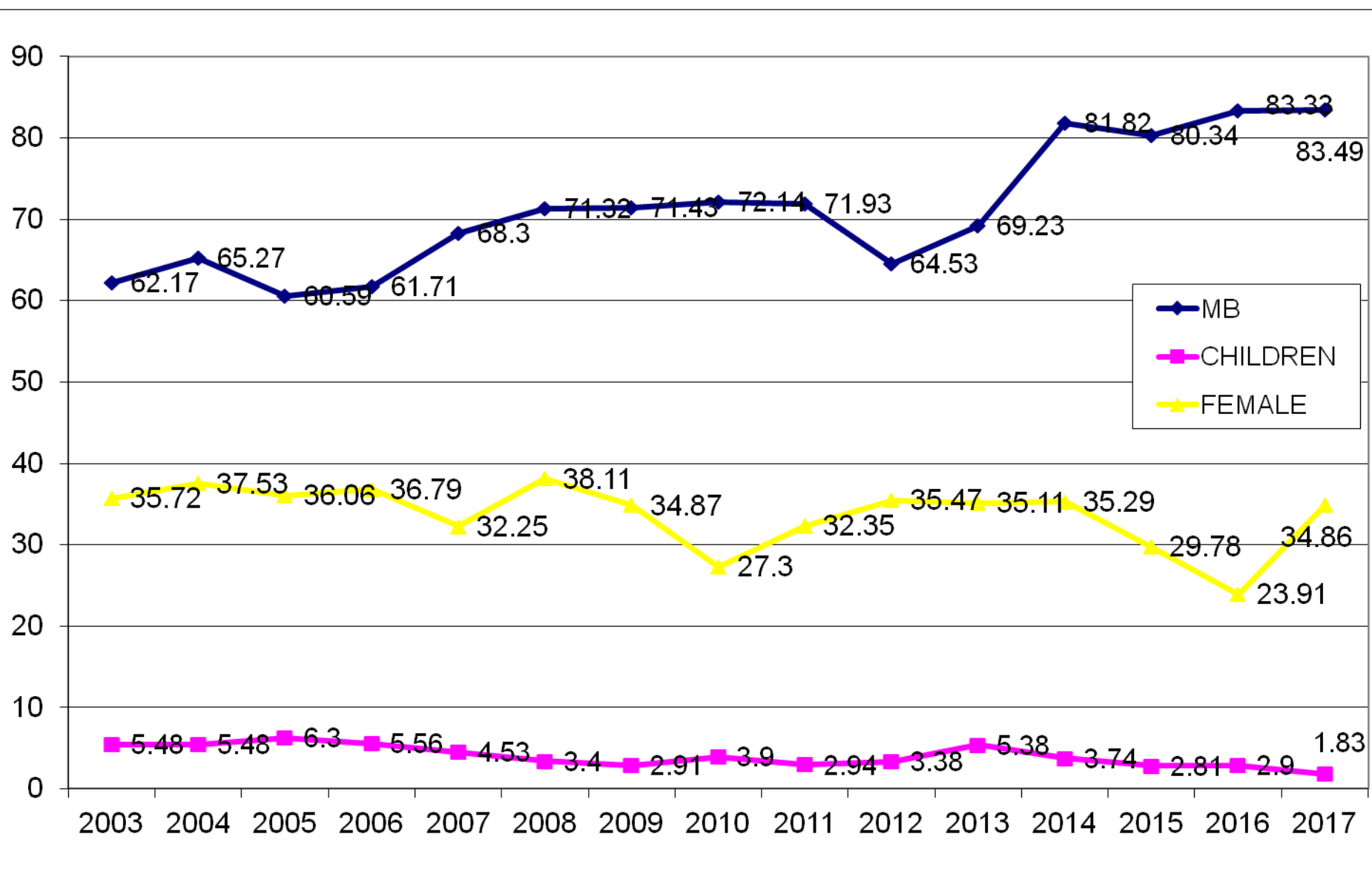
essential indicators on leprosy

Year	New cases detection					Cured	Under treatment at the end of the year	PR 1/10,000
	Total	DR 1/100,000	MB (%)	Child (%)	Dis. Gra 2			
2003	949	1.18	62.17	5.48	18.86	1,034	1,204	0.15
2004	858	1.04	65.27	5.48	16.90	1,210	828	0.10
2005	746	0.90	60.59	6.30	16.22	941	642	0.10
2006	666	0.79	61.71	5.56	17.27	768	572	0.10
2007	552	0.66	68.30	4.53	18.48	640	506	0.10
2008	530	0.62	71.32	3.40	16.23	528	540	0.10
2009	413	0.48	71.43	2.91	19.37	595	363	0.04
2010	359	0.41	72.14	3.9	18.66	398	318	0.10
2011	374	0.43	71.93	2.94	21.39	339	322	0.04
2012	296	0.34	64.53	3.38	14.86	357	265	0.03
2013	260	0.29	69.23	5.38	16.54	315	250	0.02
2014	187	0.2	81.82	3.74	10.70	227	181	0.02
2015	178	0.19	80.34	2.81	17.42	168	174	0.02
2016	138	0.15	83.33	2.90	23.91	305	152	0.02
2017	109	0.12	83.49	1.83	23.85	112	134	0.01

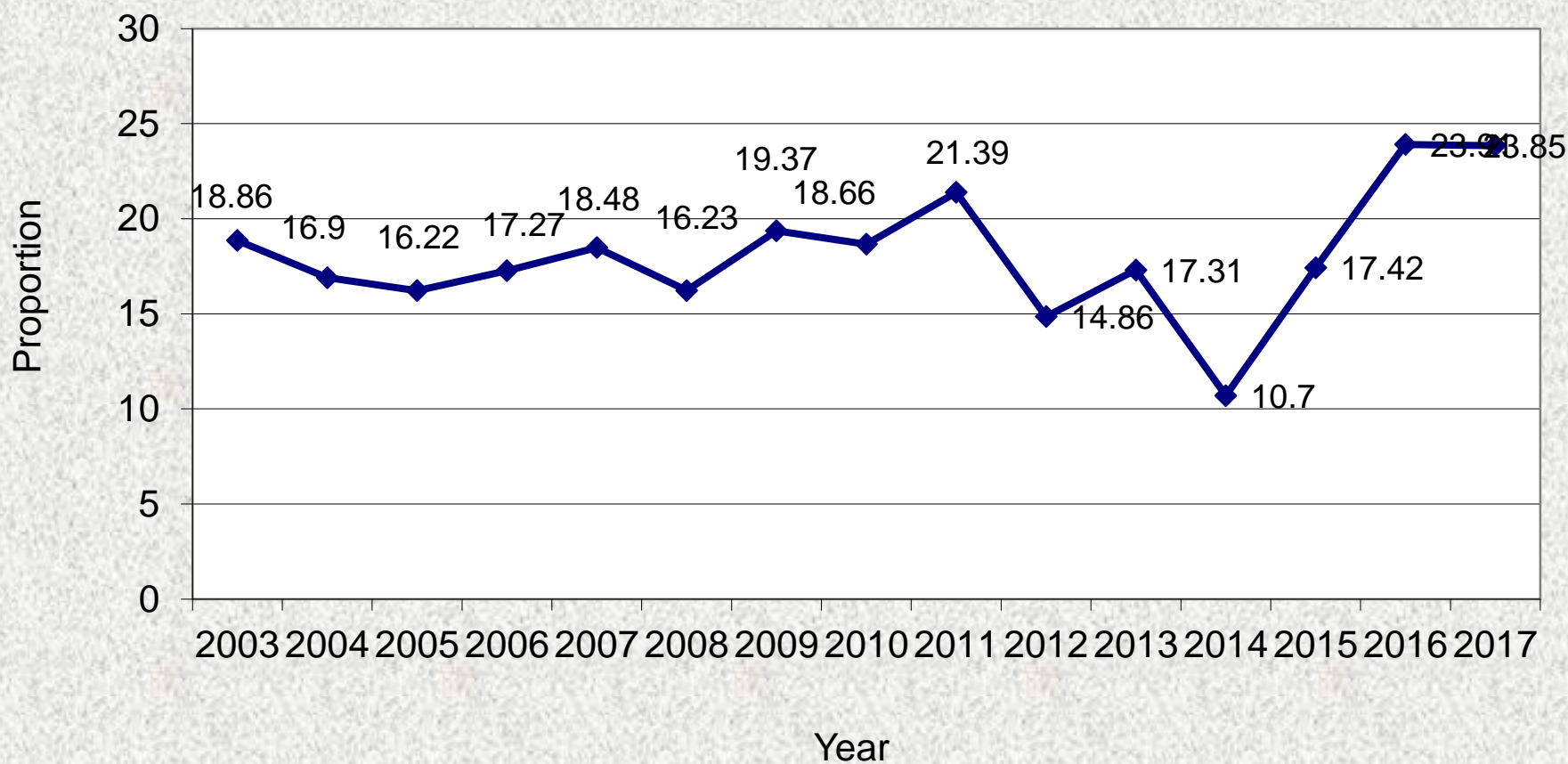
PREVALENCE RATE (1/10,000) AND DETECTION RATE (1/100,000)



pPROPORTION OF mb, fEMALE AND cCHILDREN



Proportion of disability grade 2 among new cases



Activities of the programme

1. IEC:

- Health education.
- Training.
- Materials.



Activities of the programme

2. Case detection

- Population survey in high endemic areas.
- Contact survey.
- Notification.
- LEC.



Activities of the programme



Activities of the programme

3. Treatment and case holding

- MDT: 100%
- Early detection and treatment of lepra reactions.
- Neuritis /Deformities management



Activities of the programme

4. POD and Rehabilitation

- Training courses for patients and their relatives
- Reconstructive surgery
- CBR integration
- Vocation training: Embroidery, sewing, motorbike repairing courses.



Activities of the programme



Activities of the programme

5. Monitoring, supervision and evaluation

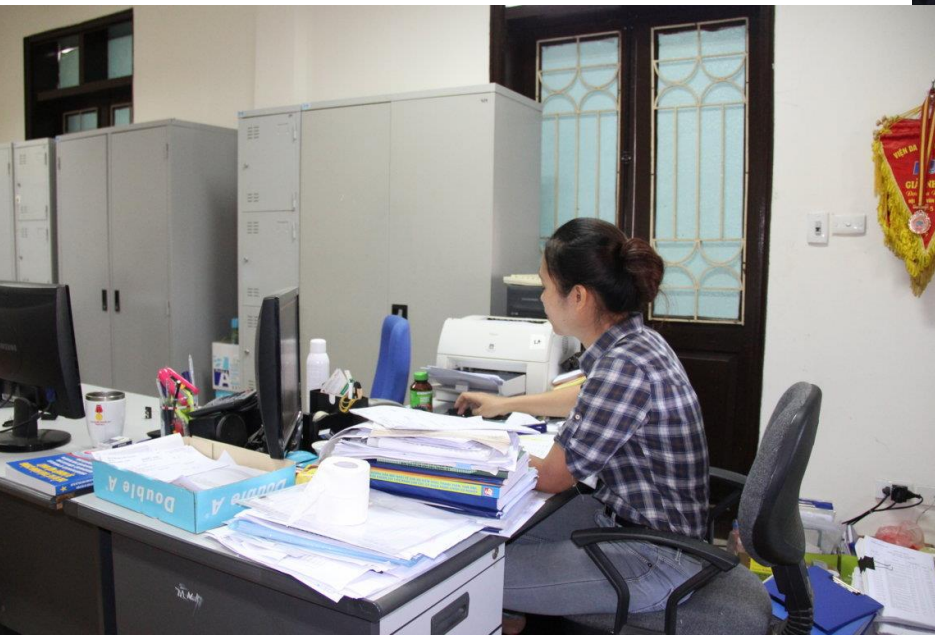
- National level: Technical Guidance Dept.: Every 3 months.
- Provincial level to commune level.
- Outside: NGOs



Activities of the programme

6. Recording and reporting

- District to provincial level: Every 3 month.
- Province -> Regional hospital: Every 3 month.
- Province/Region -> National Hospital/Program: Every 6 month.



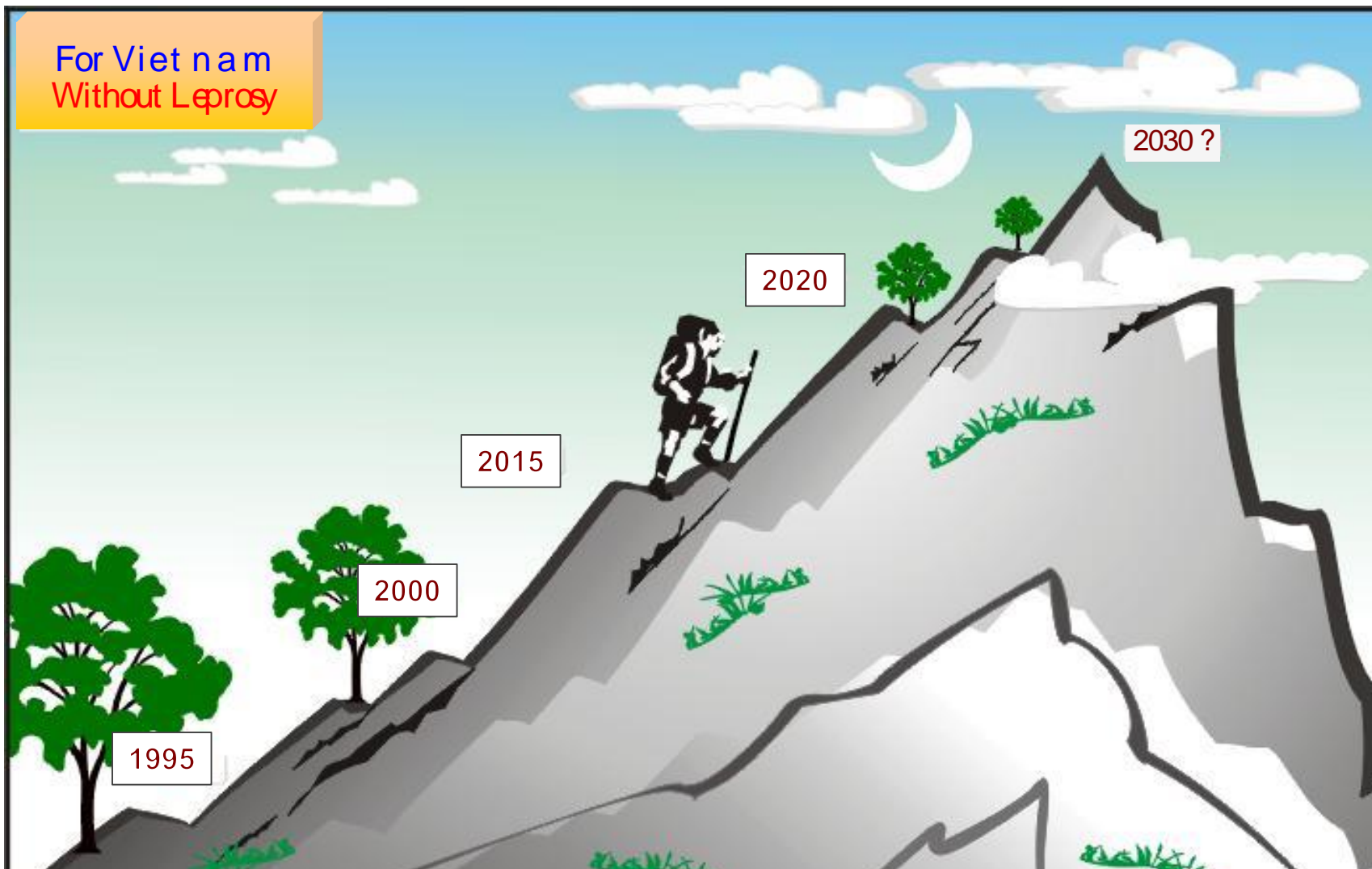
Lessons

- Commitment from the Government
- Sustaining the leprosy network and leprosy services after the goal of leprosy elimination
- Integration of leprosy services into primary health care.
- Launching the campaign of IEC to the community for elimination of stigma and discrimination to PAL and their families.
- Strengthening activities of POD and Rehabilitation

CONCLUSIONS

- Leprosy elimination at National and district levels
- 18000 PAL with severe Disabilities
- Priority activities:
 - Sustaining leprosy network
 - Early detection of new cases for reducing grade 2 deformities
 - POD and Rehabilitation

For Viet nam
Without Leprosy





Thank you for your attention!